

# Intrusion Prevention for the Cisco ASA 5500 Series

## Enhance your firewall security with the most widely deployed commercial IPS in the world

As users and data leave the corporate boundary and the network access layer becomes more porous, deep network traffic inspection becomes increasingly important. Only Cisco IPS backed by Cisco Security Intelligence Operations offers market leading, context aware threat prevention up to Layer 7 that augments your firewall and VPN deployment. Cisco IPS integrates directly into the Cisco Borderless Network and Data Center Architectures due to its high speeds ranging from 45Mbps to 10Gbps. With strong default efficacy, install the device and secure your network immediately. Also, achieve full visibility across your network with Cisco Security Manager to mitigate risk and meet compliance all while reducing your expenses.



### Mitigate Risks

Manage risks with a broad and deep set of inspection capabilities.

- Protect against zero day attacks over 40 engines and 6,500 stateful, vulnerability-based signatures that protect against tens of thousands of exploits and countless more to come.
- Inspect than a wide variety of protocols to ensure RFC conformance and prevent hacks.
- Identify the source of denial of service (DoS), distributed denial of service (DDoS), SYN flood, and encrypted attacks with Cisco Global Correlation and block them.
- Use patented anti-evasion technology to defend and monitor against worms, viruses, Trojans, reconnaissance, spyware, botnets, phishing, peer to peer, malware as well as numerous evasions techniques.
- Guard Cisco infrastructure with specific protections for Unified Communications, WLAN, routing and switching.

### Unparalleled Global Correlation

As Advanced Persistent Threats, botnets and other blended threats evolve, signature-based content inspection alone becomes insufficient to identify and mitigate nefarious activity. Leveraging 10 years of reputation technology heritage, Cisco IPS Global Correlation looks beyond attacks to identify attackers. With Cisco IPS Global Correlation backed by SIO, Cisco IPS gains visibility into hundreds of additional security parameters, millions of rules, and 8 TB of threat telemetry per day from market leading email, web, Firewall and IPS devices.

### Ensure Compliance

- U.S. Sarbanes-Oxley Act (SOX)
- U.S. Gramm-Leach-Bliley Act (GLBA)
- Payment Card Industry standard (PCI)
- NERC Critical Infrastructure Protection (CIP)
- Health Insurance Portability and Accountability Act (HIPAA)
- U.S. Federal Information Security Management Act (FISMA)

### Network Ready Capabilities

To meet the needs of the most demanding networks, Cisco IPS directly integrates into the firewall to deliver multi-gig performance, low latency, and high availability features. With dedicated hardware, the Cisco IPS 5500 Series delivers performance 150 Mbps to 10Gbps to meet the rigors of a broad range of applications and network use.

Deployment options include:

- Active-active and active-standby
- Fail-open and Fail-closed modes
- IDS and IPS modes
- Redundant power supplies
- Load balancing capabilities

Inspect encapsulated traffic include:

- GRE
- MPLS
- 802.1q,
- IPv4 in IPv4
- IPv4 in IPv6
- Q-in-Q double VLAN

## Seamless Network Integration

Cisco IPS seamlessly integrates into the Cisco ASA firewall and network architecture. Whether defending the datacenter, core or edge, Cisco IPS, a critical component of the SecureX architecture, provides threat protection up to layer 7. To reduce capital expenditures, Cisco IPS is built upon common software architecture and custom hardware platforms that enable deployment anywhere in the Cisco network including routing, switching and firewall platforms. A consistent policy and operations framework help bring the system together to meet compliance and manage risk at a lower operational cost.

## Network Ready Capabilities

To meet the needs of the most demanding networks, Cisco IPS directly integrates into the firewall to deliver multi-gig performance, low latency, and high availability features. With dedicated hardware, the Cisco IPS 5500 Series delivers performance 150 Mbps to 10Gbps to meet the rigors of a broad range of applications and network use. Flexible and highly available deployment options include active-active and active-standby configurations; fail-open and fail-closed modes; IDS and IPS modes; redundant power supplies, and load balancing capabilities. Inspect encapsulated traffic including GRE, MPLS, 802.1q, IPv4 in IPv4, IPv4 in IPv6 and Q-in-Q double VLAN.

## Proven Threat Prevention

Do you trust your solution to identify and mitigate threats? With over \$100M invested in security research, 500 threat analysts, and terabytes of threat data fed into SensorBase every day, Cisco IPS backed by SIO brings confidence to customer networks. That is why the award-winning Cisco IPS is the most widely deployed commercial IPS technology in the world and independent testing agencies, such as NSS, recommend Cisco IPS as well.

## Complete Control and Real Time Visibility

Cisco provides management solutions for a few Cisco IPS devices or hundreds. Cisco IPS Manager Express (IME) is an all-in-one IPS management and reporting application for up to 10 devices. Cisco Security Manager (CSM) is an enterprise-class security management application with thousands of real-world deployments.

Both solutions support Cisco ASA 5500 Series Adaptive Security Appliances, Cisco IPS 4200 Series Sensor Appliances, Cisco Integrated Services Routers (ISRs), and Cisco Intrusion Detection Services Modules (IDSMs).

## Cisco IPS Manager Express offers:

- Provisioning, monitoring, and troubleshooting
- Drag-and-drop dashboard gadgets provide easy customization, and personalized views remember your settings to minimize setup time
- Flexible reporting tool: Reporting tool allows you to generate custom and compliance reports in seconds:

Figure 1. Cisco IPS Manager Express



## CSM 4.x offers:

- Flexible processes to incrementally provision new and updated signatures, create IPS policies for those signatures, and then share the policies across devices.
- Integrated tuning and troubleshooting tools including IPS event-to-policy linkages and cross-launching capabilities
- Enhanced reporting and event management support for Cisco's latest IPS features including Cisco IPS Global Correlation
- RBAC and workflow ensures error-free deployments and process compliance

Figure 2. Integrated Event Console

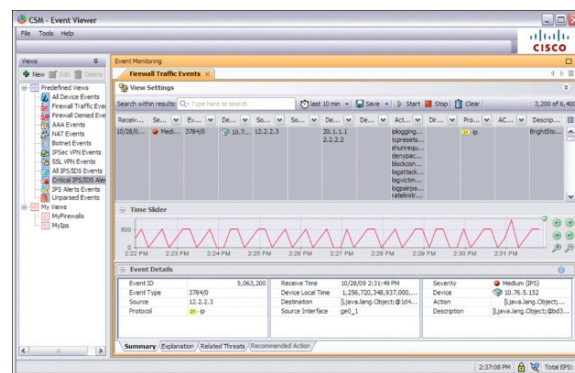


Table 1. Cisco ASA 5500 Series IPS Solution Specifications

Feature	Cisco ASA 5585-60 IPS	Cisco ASA 5585-40 IPS	Cisco ASA 5585-20 IPS	Cisco ASA 5585-10 IPS	Cisco ASA 5540 IPS	Cisco ASA 5520 IPS	Cisco ASA 5510 IPS*	Cisco ASA 5505 IPS*
<b>IPS</b>								
Maximum IPS throughput Media Rich*(Mbps)	10,000 with IPS-SSP-60	5,000 with IPS-SSP-40	3,000 with IPS-SSP-20	2,000 with IPS-SSP-10	500 with AIP-SSM-20 650 with AIP-SSM-40	225 with AIP-SSM-10 375 with AIP-SSM-20 450 with AIP-SSM-40	150 with AIP-SSM-10	75 with AIP-SSC-5
Maximum IPS throughput Transactional* (Mbps)	5,000 with IPS-SSP-60	3,000 with IPS-SSP-40	1,500 with IPS-SSP-20	1,000 with IPS-SSP-10	250 with AIP-SSM-20 400 with AIP-SSM-40	100 with AIP-SSM-10 200 with AIP-SSM-20 320 with AIP-SSM-40	100 with AIP-SSM-10	35 with AIP-SSC-5
Threat protection	25,000+ threats	25,000+ threats	25,000+ threats	25,000+ threats	25,000+ threats	25,000+ threats	25,000+ threats	25,000+ threats
Zero-day protection with anomaly detection	Yes	Yes	Yes	Yes	Yes	Yes	Yes	No
Global Correlation	Yes	Yes	Yes	Yes	Yes	Yes	Yes	No
Custom signature support	Yes	Yes	Yes	Yes	Yes	Yes	Yes	No
High Availability	Active/Active & Active/ Standby	Active/Active and Active/ Standby	Active/Active and Active/ Standby	Active/Active and Active/ Standby	Active/Active and Active/ Standby	Active/ Active; Active/ Standby	Not supported; Active/ Active; Active/ Standby***	Not supported; stateless Active/ Standby & redundant ISP support**
Redundant Power Supplies	Yes	Yes	Yes	Yes	No	No	No	No
<b>Firewall</b>								
Maximum firewall throughput (Mbps large packet)	40,000	20,000	10,000	5,000	650	450	300	150
Maximum firewall connections	8,000,000	4,000,000	3,000,000	2,000,000	400,000	280,000	50,000/ 130,000	10,000/ 25,000
<b>Ports</b>								
Fast Ethernet	0	0	0	0	0	4 3 SP edition	8	(10/100)
Gigabit Ethernet (copper)	12	12	16	16	4	4	0 2 SP edition	0
10 Gigabit Ethernet	8	8	4	4	0	0	0	0

\* Transactional is 440 byte, HTTP traffic with high connections/second and one transaction per connection seen in ecommerce transactions and instant messaging. Media-Rich is 765 byte, HTTP traffic with low connections/second and multiple transactions per connection which is seen on the most popular websites. Every deployment scenario is different and IPS performance will vary based on live traffic profiles. Users should test with as much live traffic as possible to assess your network's individual characteristics.

\*\* Separately licensed feature; includes two SSL licenses with base system

\*\*\* Available for the firewall feature set

Table 2 provides Cisco AIP SSM and IPS SSP specifications.

Table 2. Cisco AIP SSM and IPS SSP Specifications

Feature	Cisco AIP-SSC-5	Cisco AIP-SSM-10	Cisco AIP-SSM-20	Cisco AIP-SSM-40	Cisco IPS SSP-10	Cisco IPS SSP-20	Cisco IPS SSP-40	Cisco IPS SSP-60
<b>Technical Specifications</b>								
<b>Management and monitoring interface</b>	Uses host ASA 5505 management interface	1 Ethernet 10/100 port	1 Ethernet 10/100 port	1 Ethernet 10/100/1000 port	1 Ethernet 10/100/1000 port	1 Ethernet 10/100/1000 port	1 Ethernet 10/100/1000 port	1 Ethernet 10/100/1000 port
<b>Memory</b>	512 MB	1 GB	2 GB	4 GB	6 GB	12 GB	24 GB	48 GB
<b>Minimum flash</b>	512 MB	256 MB	256 MB	2 GB	2 GB	2 GB	2 GB	2 GB
<b>Environmental Operating Ranges</b>								
<b>Operating Temperature</b>	32 to 104°F (0 to 40°C)	32 to 104°F (0 to 40°C)	32 to 104°F (0 to 40°C)	32 to 104°F (0 to 40°C)	+50F to +95F (+10C to +35C)	+50F to +95F (+10C to +35C)	+50F to +95F (+10C to +35C)	+50F to +95F (+10C to +35C)
<b>Relative humidity</b>	5 to 95% noncondensing	5 to 95% noncondensing	5 to 95% noncondensing	5 to 95% noncondensing	10% to 90% (noncondensing)	10% to 90% (noncondensing)	10% to 90% (noncondensing)	10% to 90% (noncondensing)
<b>Nonoperating</b>								
<b>Temperature</b>	-13 to 158°F (-25 to 70°C)	-13 to 158°F (-25 to 70°C)	-13 to 158°F (-25 to 70°C)	-13 to 158°F (-25 to 70°C)	-40F to +158F (-40C to +70C)	-40F to +158F (-40C to +70C)	-40F to +158F (-40C to +70C)	-40F to +158F (-40C to +70C)
<b>Relative humidity</b>	5 to 95% noncondensing	5 to 95% noncondensing	5 to 95% noncondensing	5 to 95% noncondensing	5% to 95% (noncondensing)	5% to 95% (noncondensing)	5% to 95% (noncondensing)	5% to 95% (noncondensing)
<b>Altitude</b>	0 to 15,000 ft (4570 m)	0 to 15,000 ft (4570 m)	0 to 15,000 ft (4570 m)	0 to 15,000 ft (4570 m)	0 to 30,000 ft (9144 m)	0 to 30,000 ft (9144 m)	0 to 30,000 ft (9144 m)	0 to 30,000 ft (9144 m)
<b>Power Consumption and Mean Time Between Failure</b>								
<b>Maximum Peak</b>	30W maximum	90W maximum	90W maximum	90W maximum	400W maximum	400W maximum	400W maximum	400W maximum
<b>Steady State</b>								
<b>Mean time between failure (MTBF)</b>	874,070 hours (100 years)	299,588 hours (31 years)	309,296 hours (35 years)	221,679 hours (25 years)	109,887 hrs	102,869 hrs	87,829 hrs	78,136 hrs
<b>Physical Specifications</b>								
<b>Dimensions (HxWxD)</b>	0.68 x 3.55 x 5.2 in (1.73 x 9.02 x 13.21 cm)	1.70 x 6.80 x 11.00 in. (4.32 x 17.27 x 27.94 cm)	1.70 x 6.80 x 11.00 in. (4.32 x 17.27 x 27.94 cm)	1.70 x 6.80 x 11.00 in. (4.32 x 17.27 x 27.94 cm)	1.70 x 6.80 x 12.25 in. (4.32 x 17.27 x 31.12 cm)	1.70 x 6.80 x 12.25 in. (4.32 x 17.27 x 31.12 cm)	1.70 x 6.80 x 12.25 in. (4.32 x 17.27 x 31.12 cm)	1.70 x 6.80 x 12.25 in. (4.32 x 17.27 x 31.12 cm)
<b>Weight</b>	0.42 lb (0.19 kg)	3.00 lb (1.36 kg)	3.00 lb (1.36 kg)	2.58 lb (1.17 kg)	3.00 lb (1.36 kg)	3.00 lb (1.36 kg)	3.00 lb (1.36 kg)	3.00 lb (1.36 kg)
<b>Regulatory and Standards Compliance</b>								
<b>Safety</b>	UL 1950, CSA C22.2 No. 950, EN 60950 IEC 60950, AS/NZS3260, TS001	UL 1950, CSA C22.2 No. 950, EN 60950 IEC 60950, AS/NZS3260, TS001	UL 1950, CSA C22.2 No. 950, EN 60950 IEC 60950, AS/NZS3260, TS001	UL 1950, CSA C22.2 No. 950, EN 60950 IEC 60950, AS/NZS3260, TS001	UL 60950, CSA C22.2 No. 60950, EN 60950 IEC 60950, AS/NZS60950	UL 60950, CSA C22.2 No. 60950, EN 60950 IEC 60950, AS/NZS60950	UL 60950, CSA C22.2 No. 60950, EN 60950 IEC 60950, AS/NZS60950	UL 60950, CSA C22.2 No. 60950, EN 60950 IEC 60950, AS/NZS60950
<b>Electromagnetic compatibility (EMC)</b>	CE marking, FCC Part 15 Class A, AS/NZS 3548 Class A, VCCI Class A, EN55022 Class A, CISPR22 Class A, EN61000-3-2, EN61000-3-3	CE marking, FCC Part 15 Class A, AS/NZS 3548 Class A, VCCI Class A, EN55022 Class A, CISPR22 Class A, EN61000-3-2, EN61000-3-3	CE marking, FCC Part 15 Class A, AS/NZS 3548 Class A, VCCI Class A, EN55022 Class A, EN55022 Class A, CISPR22 Class A, EN61000-3-2, EN61000-3-3	CE marking, FCC Part 15 Class A, AS/NZS 3548 Class A, VCCI Class A, EN55022 Class A, CISPR22 Class A, EN61000-3-2, EN61000-3-3	CE marking, FCC Part 15 Class A, AS/NZS CISPR22 Class A, VCCI Class A, EN55022 Class A, CISPR22 Class A, EN61000-3-2, EN61000-3-3	CE marking, FCC Part 15 Class A, AS/NZS CISPR22 Class A, VCCI Class A, EN55022 Class A, CISPR22 Class A, EN61000-3-2, EN61000-3-3	CE marking, FCC Part 15 Class A, AS/NZS CISPR22 Class A, VCCI Class A, EN55022 Class A, CISPR22 Class A, EN61000-3-2, EN61000-3-3	CE marking, FCC Part 15 Class A, AS/NZS CISPR22 Class A, VCCI Class A, EN55022 Class A, CISPR22 Class A, EN61000-3-2, EN61000-3-3

## Ordering Information

To place an order, visit the [Cisco Ordering homepage](#). See Table 3 for ordering information.

Table 3. Ordering Information

Product Name	Part Number
<b>Cisco ASA 5505 Adaptive Security Appliance</b>	
Cisco ASA 5505 50-User Adaptive Security Appliance with AIP-SSC-5 (chassis, software, 8 Fast Ethernet interfaces, 10 IPsec VPN peers, 2 SSL VPN peers, 3DES/AES license)	ASA5505-50-AIP5-K9
Cisco ASA 5505 Unlimited-User Adaptive Security Appliance with Security Plus License and AIP-SSC-5 (chassis, software, 8 Fast Ethernet interfaces, 25 IPsec VPN peers, 2 SSL VPN peers, DMZ support, stateless Active/Standby high availability, 3DES/AES license)	ASA5505-U-AIP5P-K9
<b>Cisco ASA 5510 Adaptive Security Appliance</b>	
Cisco ASA 5510 Adaptive Security Appliance with AIP-SSM-10 (chassis, software, 250 VPN peers, 4 Fast Ethernet interfaces, 3DES/AES)	ASA5510-AIP10-K9
Cisco ASA 5510 Adaptive Security Appliance with Security Plus License and AIP-SSM-10 (chassis, software, 2 Gigabit Ethernet interfaces, 3 Fast Ethernet interfaces, 250 IPsec VPN peers, 2 SSL VPN peers, Active/Active high availability, 3DES/AES)	ASA5510-AIP10SP-K9
Cisco ASA 5510 Adaptive Security Appliance with Security Plus License and AIP-SSM-20 (chassis, software, 2 Gigabit Ethernet interfaces, 3 Fast Ethernet interfaces, 250 IPsec VPN peers, 2 SSL VPN peers, Active/Active high availability, 3DES/AES)	ASA5510-AIP20SP-K9
<b>Cisco ASA 5520 Adaptive Security Appliance</b>	
Cisco ASA 5520 Adaptive Security Appliance with AIP-SSM-10 (chassis, software, 750 VPN peers, 4 Gigabit Ethernet interfaces, 3DES/AES)	ASA5520-AIP10-K9
Cisco ASA 5520 Adaptive Security Appliance with AIP-SSM-20 (chassis, software, 750 VPN peers, 4 Gigabit Ethernet interfaces, 3DES/AES)	ASA5520-AIP20-K9
Cisco ASA 5520 Adaptive Security Appliance with AIP-SSM-40 (chassis, software, 750 VPN peers, 4 Gigabit Ethernet interfaces, 3DES/AES)	ASA5520-AIP40-K9
<b>Cisco ASA 5540 Adaptive Security Appliance</b>	
Cisco ASA 5540 Adaptive Security Appliance with AIP-SSM-20 (chassis, software, 5000 VPN peers, 4 Gigabit Ethernet interfaces, 3DES/AES)	ASA5540-AIP20-K9
Cisco ASA 5540 Adaptive Security Appliance with AIP-SSM-40 (chassis, software, 5000 VPN peers, 4 Gigabit Ethernet interfaces, 3DES/AES)	ASA5540-AIP40-K9
<b>Cisco ASA 5585 Adaptive Security Appliances</b>	
Cisco ASA 5585-X Firewall Edition SSP-10 IPS SSP-10 bundle includes 8 Gigabit Ethernet interfaces, 2 Gigabit Ethernet management interfaces, 5000 IPsec VPN peers, 2 SSL VPN peers, DES license	ASA5585-S10P10-K8
Cisco ASA 5585-X Firewall Edition SSP-10 IPS SSP-10 bundle includes 8 Gigabit Ethernet interfaces, 2 Gigabit Ethernet management interfaces, 5000 IPsec VPN peers, 2 SSL VPN peers, 3DES/AES license	ASA5585-S10P10-K9
Cisco ASA 5585-X Firewall Edition SSP-10 IPS SSP-10 bundle includes 8 Gigabit Ethernet interfaces, 2 10 Gigabit Ethernet SFP+ interfaces, 2 Gigabit Ethernet management interfaces, 5000 IPsec VPN peers, 2 SSL VPN peers, dual AC power, 3DES/AES license	ASA5585-S10P10XK9
Cisco ASA 5585-X Firewall Edition SSP-20 IPS SSP-20 bundle includes 8 Gigabit Ethernet interfaces, 2 Gigabit Ethernet management interfaces, 10,000 IPsec VPN peers, 2 SSL VPN peers, DES license	ASA5585-S20P20-K8
Cisco ASA 5585-X Firewall Edition SSP-20 IPS SSP-20 bundle includes 8 Gigabit Ethernet interfaces, 2 Gigabit Ethernet management interfaces, 10,000 IPsec VPN peers, 2 SSL VPN peers, 3DES/AES license	ASA5585-S20P20-K9
Cisco ASA 5585-X Firewall Edition SSP-20 IPS SSP-20 bundle includes 8 Gigabit Ethernet interfaces, 2 10 Gigabit Ethernet SFP+ interfaces, 2 Gigabit Ethernet management interfaces, 10,000 IPsec VPN peers, 2 SSL VPN peers, dual AC power, 3DES/AES license	ASA5585-S20P20XK9
Cisco ASA 5585-X Firewall Edition SSP-40 IPS SSP-40 bundle includes 6 Gigabit Ethernet interfaces, 4 10 Gigabit Ethernet SFP+ interfaces, 2 Gigabit Ethernet management interfaces, 10,000 IPsec VPN peers, 2 SSL VPN peers, dual AC power, DES license	ASA5585-S40P40-K8
Cisco ASA 5585-X Firewall Edition SSP-40 IPS SSP-40 bundle includes 6 Gigabit Ethernet interfaces, 4 10 Gigabit Ethernet SFP+ interfaces, 2 Gigabit Ethernet management interfaces, 10,000 IPsec VPN peers, 2 SSL VPN peers, dual AC power, 3DES/AES license	ASA5585-S40P40-K9
Cisco ASA 5585-X Firewall Edition SSP-60 IPS SSP-60 bundle includes 6 Gigabit Ethernet interfaces, 4 10 Gigabit Ethernet SFP+ interfaces, 2 Gigabit Ethernet management interfaces, 10,000 IPsec VPN peers, 2 SSL VPN peers, dual AC power, 3DES/AES license	ASA5585-S60P60-K8
Cisco ASA 5585-X Firewall Edition SSP-60 IPS SSP-60 bundle includes 6 Gigabit Ethernet interfaces, 4 10 Gigabit Ethernet SFP+ interfaces, 2 Gigabit Ethernet management interfaces, 10,000 IPsec VPN peers, 2 SSL VPN peers, dual AC power, 3DES/AES license	ASA5585-S60P60-K9
<b>Security Services Modules</b>	
Cisco ASA 5500 Series Advanced Inspection and Prevention Security Services Card 5 (AIP-SSC-5)	ASA-SSC-AIP-5-K9=
Cisco ASA 5500 Series Advanced Inspection and Prevention Security Services Module 10 (AIP-SSM-10)	ASA-SSM-AIP-10-K9=
Cisco ASA 5500 Series Advanced Inspection and Prevention Security Services Module 20 (AIP-SSM-20)	ASA-SSM-AIP-20-K9=
Cisco ASA 5500 Series Advanced Inspection and Prevention Security Services Module 40 (AIP-SSM-40)	ASA-SSM-AIP-40-K9=
<b>Security Services Processors</b>	
Cisco ASA 5585-X IPS Security Services Processor 10 s with 8 GE	ASA-SSP-IPS10
Cisco ASA 5585-X IPS Security Services Processor 20 (SSP-20) with 8 GE	ASA-SSP-IPS20
Cisco ASA 5585-X IPS Security Services Processor 40 (SSP-40) with 6 GE, 4 SFP+	ASA-SSP-IPS40
Cisco ASA 5585-X IPS Security Services Processor-60 (SSP-60) with 6 GE, 4 SFP+	ASA-SSP-IPS60

---

## Service and Support

Cisco offers a wide range of service programs to accelerate customer success. These innovative services programs are delivered through a unique combination of people, processes, tools, and partners, resulting in high levels of customer satisfaction. Cisco services help you to protect your network investment, optimize network operations, and prepare your network for new applications to extend network intelligence and the power of your business. For more information about Cisco services for security, visit <http://www.cisco.com/go/services/security>.

## Cisco Services for IPS

Cisco Services for IPS is an integral part of the Cisco ASA 5500 Series IPS Solution and enables operators to receive time-critical signature file updates and alerts. Part of the Cisco Technical Support Services portfolio, Cisco Services for IPS allows your Cisco ASA 5500 Series IPS Solution to stay current on the latest threats so that malicious or damaging traffic is accurately identified, classified, and stopped. Cisco Services for IPS features include:

- Signature file updates and alerts
- Registered access to Cisco.com for online tools and technical assistance
- Access to the Cisco Technical Assistance Center
- Cisco IPS software updates
- Advance replacement of failed hardware

For more information about Cisco Services for IPS, visit [http://www.cisco.com/en/US/products/ps6076/serv\\_group\\_home.html](http://www.cisco.com/en/US/products/ps6076/serv_group_home.html).

## Export Considerations

The Cisco ASA 5500 Series IPS Solution and Cisco AIP SSMs are subject to export controls. For guidance, refer to the export compliance website at <http://www.cisco.com/wwl/export/crypto/>. For specific export questions, contact [export@cisco.com](mailto:export@cisco.com).

## Additional Information

For more information about the Cisco ASA 5500 Series IPS Solution, visit <http://www.cisco.com/go/asaiips>.

For more information about Cisco IPS solutions, visit <http://www.cisco.com/go/ips>.

For more information about Cisco ASA 5500 Series Adaptive Security Appliances, visit <http://www.cisco.com/go/asa>.

For information about Cisco IDS and IPS sensors and software versions that have reached end-of-sale status, visit [http://www.cisco.com/en/US/products/hw/vpndevc/ps4077/prod\\_eol\\_notices\\_list.html](http://www.cisco.com/en/US/products/hw/vpndevc/ps4077/prod_eol_notices_list.html).

For more information about Cisco Security Manager, Cisco Security MARS, and Cisco IPS Manager Express, visit:

- <http://www.cisco.com/go/csmanager>
- <http://www.cisco.com/go/mars>
- <http://www.cisco.com/go/ime>



---

**Americas Headquarters**  
Cisco Systems, Inc.  
San Jose, CA

**Asia Pacific Headquarters**  
Cisco Systems (USA) Pte. Ltd.  
Singapore

**Europe Headquarters**  
Cisco Systems International BV Amsterdam,  
The Netherlands

Cisco has more than 200 offices worldwide. Addresses, phone numbers, and fax numbers are listed on the Cisco Website at [www.cisco.com/go/offices](http://www.cisco.com/go/offices).