



VSX-1 Appliances

Virtualized Security Gateways

Security Appliances

VSX-1 Appliance—Model 9070

OVERVIEW

The VSX security operations platform is a virtualized security gateway that enables the creation of hundreds of security systems on a single hardware platform, delivering deep cost savings and infrastructure consolidation. Based on the proven security of VPN-1® Power, VSX provides best in class firewall, VPN, URL filtering and intrusion prevention technology to multiple networks, securely connecting them to each other and shared resources such as the Internet and DMZs. All security systems, virtual and real, are centrally managed through Check Point SmartCenter or Multi-Domain Security Management consoles. Powerful turnkey VSX-1 appliances further reduce deployment cost while delivering carrier-class reliability and scalability.

VSX enables any organization to optimize space and costs by operating a virtual network of hundreds of routers, switches, and VPN-1 gateways. For MSPs, VSX becomes the ideal platform for new subscription revenue opportunities by delivering new security services easily and efficiently. These include value-add virtualized content filtering, VPN, network segmentation and firewall services, instantly provisioned using VSX's Virtual Systems Wizard at the lowest possible cost.

BASE CONFIGURATION:

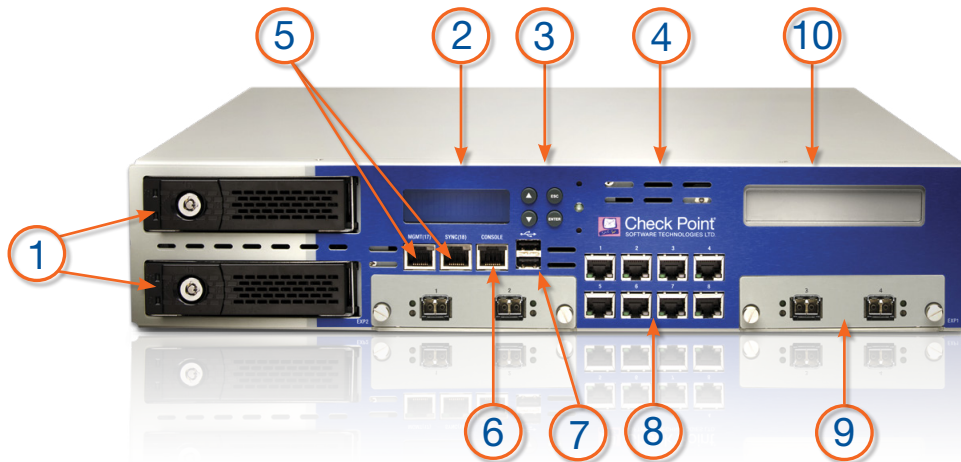
- 14 ports of 10/100/1000Base-T
- 1 Management & 1 Sync ports
- Console port
- Dual hot swappable AC power (for load-sharing and redundancy)
- Dual front facing hot swappable HDDs
- 2 x 250GB Hard Drive
- 2 front-facing cooper / fiber expansion slots
- Virtualized Firewall, VPN and SmartDefense IPS
- Starting with 10 virtual systems, upgradeable to up to 150 virtual systems

BENEFITS

- Unique and comprehensive virtualized security solution with firewall, VPN, IPS, and URL filtering
- Consolidate hundreds of security gateways to a single device, increasing device hardware utilization and reducing power, space, and cooling
- Linear scaling of performance up to 50 Gbps on the highest VSX-1 model
- Flexible deployment options including software and a full line of turnkey appliances
- Single proven security management architecture



Check Point Factsheet: VSX-1 Appliance—Model 9070



1. Redundant Hot-Swappable Hard Drives	6. Console Port
2. LCD Display	7. USB Ports
3. LCD Control Buttons	8. Eight x 1GbE Ports
4. Air Intake	9. Field Swappable Expansion Modules (Basic configuration includes 4 1GbE ports module) • 2 x 4 1GbE Fiber • 2 x 4 1GbE Copper • 2 x 2 10GbE
5. 1 x Management Port 1 x Sync Port	10. LOM (Out-of-Band Management) Card (Optional)

TECHNICAL SPECIFICATIONS

LAN Support

- 1000Base-T (10/100/1000 Mbps Ethernet) – Copper
- 1000Base-SX (1000 Mbps Ethernet) – SFP
- 1000Base-LX (1000 Mbps Ethernet) – SFP
- 10 GBase-SR (10 Gbps Ethernet) – Multi Mode
- 10 GBase-LR 10 km (10 Gbps Ethernet) – Single Mode

Hard Disk Configuration

- 2 X 250 GB HDD

Performance

- Firewall – 13.5 Gbps
- VPN – 3.5 Gbps
- Concurrent Sessions – 1.1 Million

Note: Performance data represents the maximum capabilities of the systems as measured under optimal testing conditions.

System Indicators

- 10/100/1000 Ethernet Port Status
- Power Status on System
- Failure Status on System
- Port Status on Network Interface Cards
- System Operational Indicator

Dimensions

- Standard: 17 x 20 x 3.46 in.
- Metric: 431 x 509.5 x 88 mm
- Weight: 16.5kg (36.3 lbs)

Power Requirements

- AC Input Voltage: 100-240V
- Frequency: 50/60Hz
- Power Supply Maximum: 400W
- Power Consumption Maximum: 200.7W

Environment Operating Conditions

- Temperature: 41°-104°F/5°-40°C
- Altitude: 8196ft, 2,500 m
- Humidity: 10%-85% (Non-Condensing)

Environment Non-Operating Conditions

- Temperature: -20°C to +70°C
- Humidity: Up to at least 95% (Non-Condensing)

Compliance

UL 60950; FCC Part 15, Subpart B, Class A; EN 55024; EN 55022; VCCI V-3AS/NZS 3548:1995; CNS 13438 Class A (test passed; country approval pending); KN22KN61000-4 Series, TTA; IC-950; ROHS

CONTACT CHECK POINT

Worldwide Headquarters

5 Ha'Solelim Street, Tel Aviv 67897, Israel | Tel: 972-3-753-4555 | Fax: 972-3-624-1100 | Email: info@checkpoint.com

U.S. Headquarters

800 Bridge Parkway, Redwood City, CA 94065 | Tel: 800-429-4391; 650-628-2000 | Fax: 650-654-4233 | www.checkpoint.com