



## Power-1 Appliances

Security for high-performance environments

# Security Gateways

## Power-1 Appliance—Model 5077

### OVERVIEW

The Power-1™ 5077 enables organizations to maximize security in high-performance environments such as large campuses or data centers. It combines integrated firewall, IPsec VPN, and intrusion prevention with advanced acceleration and networking technologies, delivering a high-performance, scalable security platform for multi-Gbps environments.

The Power-1 5077 is based on Check Point Software Blade Architecture for flexible and easy deployment of additional security capabilities like Application Control, Identity Awareness, VoIP protections and UTM functionality, for guaranteed low total cost of ownership.

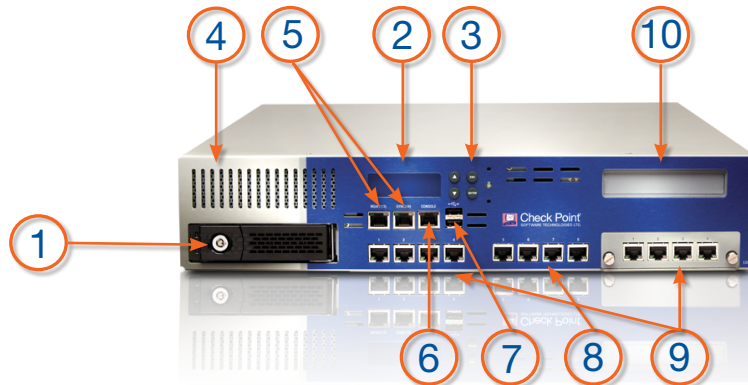
### BASE CONFIGURATION

- 10 ports of 10/100/1000Base-T
- Dedicated Management & Sync ports
- RJ45 Console port
- Dual hot swappable AC power supplies for redundancy
- Storage – Hard Drive 160GB
- Single front-facing copper/fiber (1GbE/10GbE) expansion slot
- Seven Software Blades included for high performance and unrivaled security: Firewall, IPSec VPN, Application Control, Identity Awareness, Advanced Networking, Acceleration & Clustering and IPS

### BENEFITS

- Streamlines deployment of enterprise security for large offices and data centers
- Ensures availability of business-critical applications with up to 9 Gbps firewall throughput and up to 7.5 Gbps intrusion prevention throughput
- Provides comprehensive security Software Blades including Firewall, IPS, IPsec VPN, Advanced Networking, Acceleration & Clustering, Identity Awareness, and Application Control
- Protects against emerging threats with optional Software Blades such as VoIP, Web Security, Antivirus, URL Filtering and more
- Simplifies administration with a single management console for all sites





1. Swappable Hard Drive	6. Console Port
2. LCD Display	7. USB Ports
3. LCD Control Buttons	8. 8 x 1GbE Copper Ports
4. Air Intake	9. Field Swappable Expansion Modules <ul style="list-style-type: none"> <li>• 1 Gbe Copper (4 Ports)</li> <li>• 1 GbE SX Fiber (Multi Mode) (4 Ports)</li> <li>• 1 GbE LX Fiber (Single Multi Mode) (4 Ports)</li> <li>• 10 GbE SR Fiber (Multi Mode) (2 Ports)</li> <li>• 10 GbE LR Fiber (Single Mode) (2 Ports)</li> </ul>
5. Management & Sync Ports	10. Lights-Out Management Module (Optional Out-Of-Band Management)

## TECHNICAL SPECIFICATIONS

### LAN Support

- 1000Base-T (10/100/1000 Mbps Ethernet) – Copper
- 1000Base-SX (1000 Mbps Ethernet) – SFP
- 1000Base-LX (1000 Mbps Ethernet) – SFP
- 10 GBase-SR 300 meters (10 Gbps Ethernet) – Multi Mode
- 10 GBase-LR 10 km (10 Gbps Ethernet) – Single Mode

### Hard Disk Configuration

- 160 GB HDD

### Performance

- Firewall – 9 Gbps
- VPN – 2.4 Gbps
- IPS – 7.5 Gbps
- Concurrent Sessions – 1.2 Million

Note: Performance data represents the maximum capabilities of the systems as measured under optimal testing conditions.

### Dimensions

- Standard: 17 x 20 x 3.46 in.
- Metric: 431 x 509.5 x 88mm
- Weight: 14.5kg (31.9 lbs)

### Power Requirements

- AC Input Voltage: 100-240V
- Frequency: 50/60Hz
- Power supply Maximum: 400W
- Power Consumption Maximum: 200.7W

### Environment Operating Conditions

- Temperature: 41°-104°F/5°-40°C
- Altitude: 8196ft, 2,500 m
- Humidity: 10%-85% (Non-Condensing)

### Compliance

UL 60950; FCC Part 15, Subpart B, Class A; EN 55024; EN 55022; VCCI V-3AS/NZS 3548:1995; CNS 13438 Class A (test passed; country approval pending); KN22KN61000-4 Series, TTA; IC-950; ROHS

## CONTACT CHECK POINT

### Worldwide Headquarters

5 Ha'Solelim Street, Tel Aviv 67897, Israel | Tel: 972-3-753-4555 | Fax: 972-3-624-1100 | Email: info@checkpoint.com

### U.S. Headquarters

800 Bridge Parkway, Redwood City, CA 94065 | Tel: 800-429-4391; 650-628-2000 | Fax: 650-654-4233 | www.checkpoint.com