

EMC DOCUMENTUM D2

Modern and configurable ECM user experience

ESSENTIALS

Deliver Rapid Value

- Decrease the time required to deliver solutions with configuration versus coding

Enable the New User

- Manage content without the complexity
- Reduce training costs and increase productivity

Enhance Documentum

- Achieve greater consistency of ECM rules and policies with wider user adoption and simplified information management

With technology investments under close scrutiny, you need to ensure that your Enterprise Content Management systems can quickly deliver significant value. Yet many ECM deployments suffer from long and costly deployment cycles and poor usability. Users end up resorting to non-compliant workarounds that force critical content assets "into the wild", increasing workloads and elevating cost and risk. User acceptance and the ability to rapidly deploy changes are therefore critical to the success of your ECM initiatives.

Documentum D2 is the advanced, intuitive and configurable content-centric application client for Documentum ECM. D2 offers a highly intuitive and personalizable user experience that makes knowledge workers more productive, reduces training costs, and accelerates user adoption of ECM applications. Powerful configuration eliminates the need for custom code, yielding rapid deployment and dramatically lower costs for system maintenance.

REMOVING THE COMPLEXITY FROM ECM

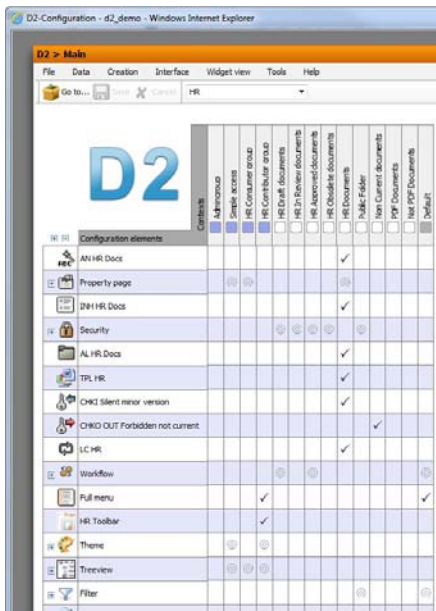
Documentum D2 takes the complexity out of ECM with a powerful configuration framework for creating purpose-built content solutions without the need for time-consuming customizations. This unique approach enables organizations to respond more rapidly to changing business needs and accelerate time-to-value for ECM deployments.

POWERFUL CONFIGURATION

Using a familiar spreadsheet-like interface, business analysts can quickly configure an application by setting the properties that control document sets, creation rules, dynamic security models, distribution lists, document lifecycles, inheritance, auto-naming, auto-linking, and more. A single configuration matrix can address a wide range of content-centric solution needs—ranging from business-critical to non-controlled content—all without custom code.

FASTER TIME TO VALUE

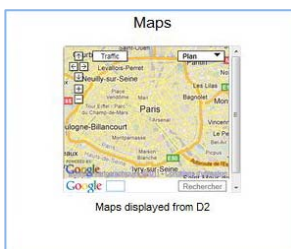
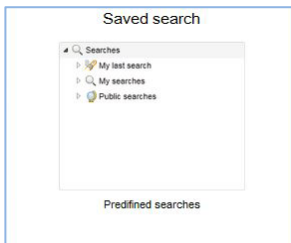
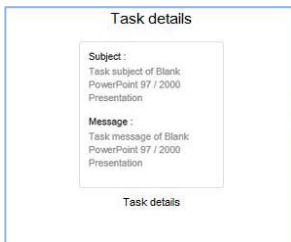
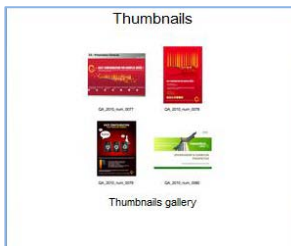
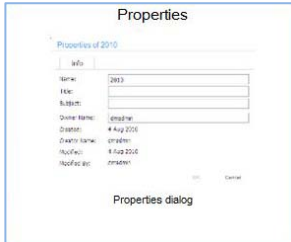
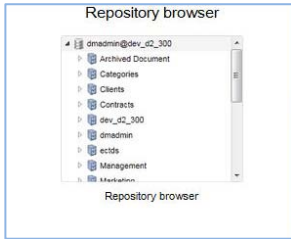
Configuration empowers both business analysts and systems administrators to change applications without having to engage specialized developers or wait for long development cycles. Changes to the configuration are experienced immediately in the application for rapid response to shifting requirements. During solution definition, this instant feedback directly involves users and helps to ensure that requirements are accurately captured.



Simplify ECM with powerful configuration

DATA SHEET

SAMPLE WIDGETS

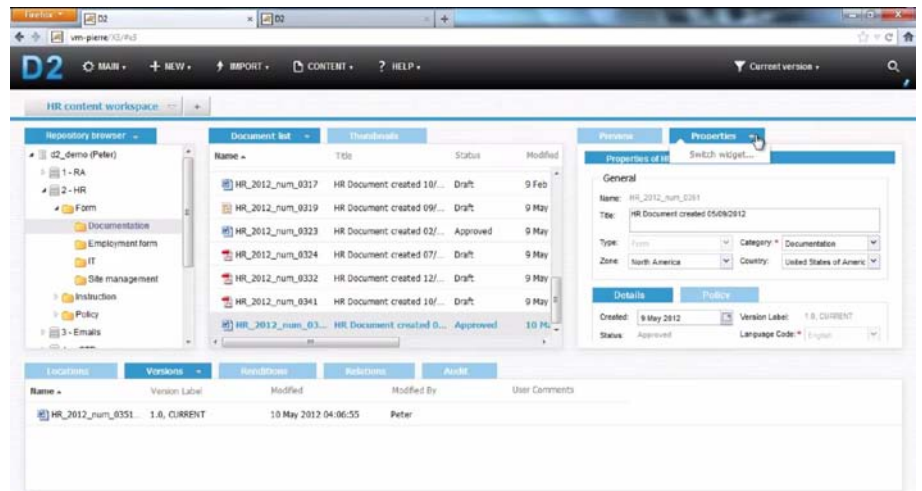


INTUITIVE AND PERSONALIZED

Documentum D2 makes ECM effortless by delivering a modern and intuitive user experience that is personalized for Documentum repository users when accessing their enterprise content. The flexible widget-based user interface drives increased user adoption and reduces training costs, while simplified access to content makes knowledge work far more productive.

Key components of the user interface include:

- **Widgets:** Enable modular layout and implement the content viewing, document management, and workflow capabilities of the product. Available widgets include repository browser, property sheets, document lists, search, tasks, etc.
- **External Content:** Google Gadgets extend the widget set and can be added to any workspace to provide access to external content and applications, such as maps, weather, social media accounts, calculators, calendars, etc.
- **Workspaces:** Provide the containers for widgets, allowing flexible layout options for different applications and user preferences. Multiple workspaces can be open simultaneously. Mashups of internal and external content can be achieved by mixing and matching widgets and gadgets in a workspace.
- **Themes:** Define consistent appearance for the user interface with color settings for headers, tabs, widgets, and backgrounds.



Personalize tasks with flexible workspace layout

Content administrators will appreciate the improved governance that comes from D2's ease of use and automated document control, including:

- Intelligent thumbnail previews and instantaneous viewing of content
- Instant application deployment of highly configured rules and content policies
- Configurable metadata and import screens for document types
- Advanced workflow, lifecycle and auditing capabilities all configurable for the content or user type
- Simple and advanced cross-repository search with configurable search screens and custom search forms
- Automated features for controlled content, such as property inheritance, auto-naming, auto-numbering, and auto-linking
- Microsoft Office integration and PDF publishing (available with the optional D2 +Pack)
- Simplified creation of relations and virtual documents

CONTACT US

See how EMC Documentum D2 can help you quickly access and manage your enterprise content. To learn more, visit www.EMC.com/ECM, or call 800.607.9546 (outside the US: +1.925.6005802).

SIMPLIFIED INFORMATION MANAGEMENT

D2's configuration is also used to define business rules and content policies to handle both basic and advanced information management needs. Use D2 for a variety of content-centric applications, such as tracking documents through review and approval workflows, quickly finding content through search and navigation with dynamic security filters, and managing controlled documents in regulated industries such as Life Sciences.

Common policies can be defined globally to ensure consistency across applications. New applications can be quickly introduced, as only the differences to the global rule set need to be validated. And as rules change, D2's configuration can be quickly updated and instantly deployed. No more lengthy delays while application changes are coded and tested. Configuration changes are reflected immediately in the user interface and application behavior.

DOCUMENTUM MADE EASY

D2 is the new face of Documentum, combining the power of Documentum's market leading ECM platform with a modern and intuitive user experience.

With its powerful configuration capability, D2 enables changes to be made on the fly to minimize deployment time and increase the speed at which ECM brings value to your business. And with a simplified implementation of ECM best practices and a significant advance in usability, D2 can accommodate the policies and standards required by your organization along with the preferences and individual working styles of different users.

EMC², EMC, the EMC logo, and Documentum are registered trademarks or trademarks of EMC Corporation in the United States and other countries. VMware [add additional per above, if required] are registered trademarks or trademarks of VMware, Inc., in the United States and other jurisdictions. © Copyright 2012 EMC Corporation. All rights reserved. Published in the USA. 06/12 Data Sheet H9525

www.EMC.com

EMC believes the information in this document is accurate as of its publication date. The information is subject to change without notice.

The EMC logo consists of the letters "EMC" in a bold, white, sans-serif font, with a superscript "2" to the right of the "C". The logo is set against a dark blue background.

