



Policy-Based Email Archiving and eDiscovery

The Business Case for Email Retention

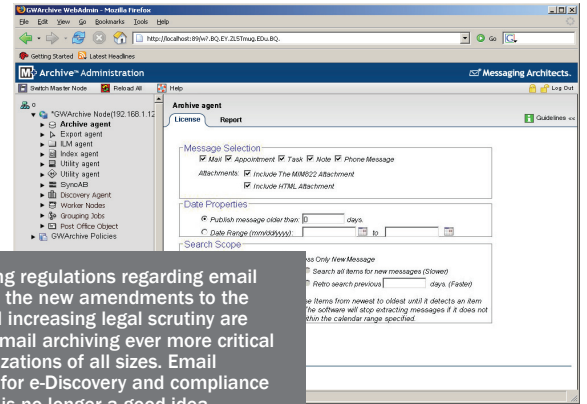
With 75% of an organization's intellectual property stored, circulated, and managed via email, there is increasing pressure to protect and manage electronic data to meet the needs of regulatory compliance and eDiscovery, while also ensuring high availability. Combined with the complexity of regulatory frameworks and costs of legal discovery, organizations need to apply modern Risk Management techniques to their enterprise email systems in order to avoid potentially disastrous consequences. M+Archive helps organizations of all sizes to resolve the complex issues of retaining, retrieving, and reporting on electronic communications by providing an intelligent archiving platform that stores, manages, and enables the discovery of electronic data from any corporate collaboration system.

Policy-Based Email Archiving

M+Archive provides a policy driven and centralized administration with full support for eDirectory and Active Directory. With M+Archive, organizations can archive all email messages, attachments, calendar items, tasks, and notes from Microsoft Exchange or Novell GroupWise. The flexible and intuitive M+Archive Administrative Console facilitates the granular application of unique policies to selected users or groups of users in your email system. M+Archive gives you flexible control over the organization's email policies; you can always amend existing policies or create new ones as your business needs change.

Intuitive eDiscovery

With M+Archive, administrators can respond to eDiscovery requests quickly and cost-effectively and significantly reduce risk and liability. Providing guided navigation for advanced search, legal hold and analysis of archived items, M+Archive allows you to search millions of email messages, calendar items, notes and tasks in seconds. With M+Archive, organizations are able to ensure a single point of discovery thereby significantly reducing their eDiscovery costs and increasing their efficiency and timeliness in responding to requests through a flexible and fully auditable export process.



"Tightening regulations regarding email retention, the new amendments to the FRCP and increasing legal scrutiny are making email archiving ever more critical for organizations of all sizes. Email archiving for e-Discovery and compliance purposes is no longer a good idea — it is a business necessity."

Source: Michael Osterman, Osterman Research, 2007

Regulatory Compliance

M+Archive comprehensively addresses the needs for regulatory compliance of regulated industries and can be used to deploy compliance modules that apply to specific vertical markets. Examples of such modules include Information Lifecycle Management, SEC compliance, and WORM-based storage. M+Archive generates a fully-indexed, application, and file format-independent archive of all electronic data for immediate search and retrieval. It can be easily configured to meet your organization's requirements, ensuring ongoing adaptability to the evolving landscape of laws and regulations.

Enterprise-Class Architecture

Based upon our modular and extensible Email Risk Management Platform, M+Archive supports true clustering and load balancing to enable multiple servers to work together. M+Archive is configured to automatically detect additional nodes and cluster together for maximum performance and uptime, leaves zero footprint on your mail servers, and requires no additional hardware or software. By pro-actively monitoring the system nodes, M+Archive identifies and detects nodes that may be overloaded and impacting performance before automatically redistributing the workload to better utilize system resources.

Interoperability

M+Archive is an easy-to-deploy, stable solution that can be seamlessly integrated into your existing email environment without compromising the speed or efficiency of your messaging system. M+Archive supports heterogeneous environments to facilitate full-scale system migrations and can be deployed in mixed messaging environments. This interoperability ensures that organizations can seamlessly archive data from Microsoft Exchange and Novell GroupWise.

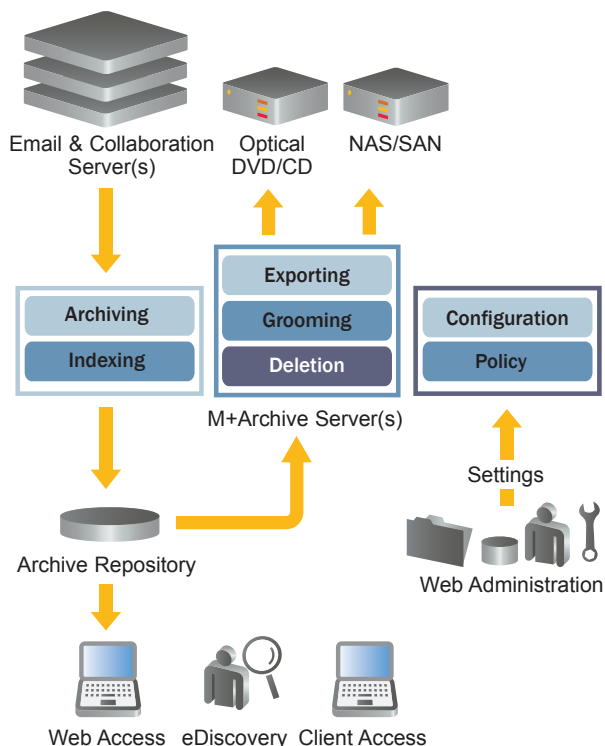
Advanced Storage Management

M+Archive is a storage-agnostic solution that can be deployed with a number of storage solutions including M+SecureStore to dramatically reduce the cost, complexity, and time traditionally required for provisioning storage. M+SecureStore provides a greener IT storage environment resulting in a substantially smaller footprint not only in capital expenditures and management labor, but also in energy consumption, cooling, data center space, and associated costs.

M+Archive also offers API-level integration with numerous third-party storage vendors like Hitachi Content Archive Platform, NetApp Storage Systems, Nexsan Assureon, and EMC Centera.

Supported Collaboration Systems

- Novell GroupWise • Microsoft Exchange



Product Highlights

Optimized Single Instance Storage – In environments where messages with attachments are forwarded to many users, SIS enables the storage of a single copy of any archived message attachment allowing administrators to reduce the size of the archive and better control the flow and management of email attachments.

Seamless End-User Experience – M+Archive is designed to offer a seamless user experience by providing a web-based search and administration interface, email client integration, and Outlook Web Access or GroupWise WebAccess integration.

Stubbing Architecture – M+Archive allows administrators to manage mailbox sizes by removing email messages, attachments, calendar items, tasks, and notes from Exchange or GroupWise 8 and replacing them with a much smaller stub that points to the copy of the item that is stored in M+Archive. With stubbing, end users can perform federated searches across online active and archived email seamlessly within Outlook 2003/2007 and GroupWise 8 clients.

Enhanced Migration Tools – M+Archive includes enhanced migration tools for interoperability and migration between email platforms. The Migration Agent allows organizations who are migrating from their current email platform to the Microsoft Exchange platform to migrate their data into the new email system and perform mailbox recovery from M+Archive to Exchange.

100% Email Retention – M+Archive's GroupWise retention timestamp feature ensures 100% retention by applying a time stamp to items that have been archived. To attain 100% retention in Exchange, you can archive the Exchange Journal account which will retain a copy of all incoming and outgoing data.

Role-Based Administration - Role-based access control and records management capabilities help organizations better comply with government regulations by restricting access to policy controls.

Data Accessibility & Portability - M+Archive offers both web-based and direct network access to the archive repository. Both methods support advanced search and secure export of records in XML and PST file formats.

To learn more visit:
www.messagingarchitects.com/m-archive